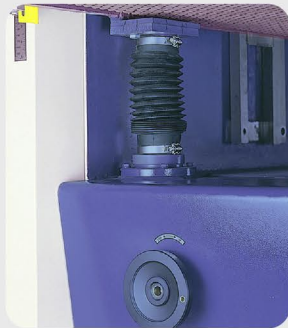


# Standard Accessories

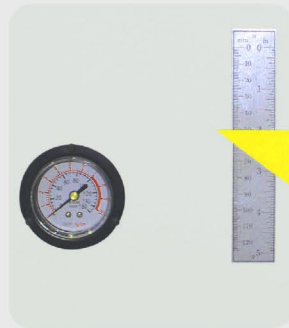
## 標準配備 (依機種不同有所調整) (Subject to change upon the variable machines.)



快速更換裝置  
Quick replace sanding belt device.



微動調整之手動調整輪  
Hand-adjustable roller with micro-adjustment.



壓力表 (於前後兩端均可設有壓力表, 可使前後操作人員了解目前機器狀況)  
Pressure gauge (can control from the machine front and rear are both setting pressure gauges).



觸碰式緊急停止桿  
Body activated emergency stop bar.



後部緊急開關 (後面收料人員, 可控制機械而減少不必要之損失)  
Emergency switch on the machines rear. (the emergency to stop working decision depend on rear operator. It can decrease lose when improper control.)



電器箱安全開關  
Safety switch for electric cabinet



控制面板 (含電腦昇降控制器; H系列不含)  
Control panel (include computer elevation controller, except H series).



機械碟式煞車裝置  
Disc braking mechanism.



無段變速進料裝置  
Variable speed feed rate.

# Optional Accessories

## 選購配備 後端拋光輪 POLISHING ROLLERS



STEEL ROLLER  
鋼輪



BRUSH ROLLER  
棕刷



CUCUMBER ROLLER  
菜瓜布輪



NYLON BRUSH ROLLER  
尼龍刷



CLOTH ROLLER  
布輪

A wide variety of polishing rollers for your choice. 本公司生產多種後端拋光輪, 可以客戶需求自由選購。

Inverter Motor  
變頻馬達



PLC  
觸控式螢幕

## 選購配備

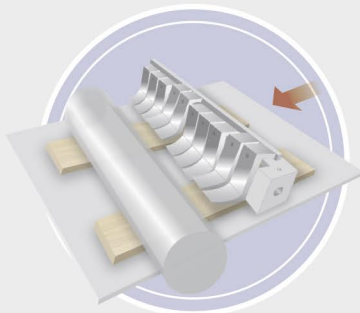


### THICKNESS MEASURING INSTRUMENT

Measuring the workpiece thickness rapidly without thickness measuring instrument.

#### 厚度測量器

在無量測儀器時，可快速測量工作物厚度。



### PIANO-KEY TYPE INFEED PRESSURE JAWS

The specially designed piano-key type infeed pressure jaws are mounted at the infeed end.

It assures smooth feeding performance regardless of wood thickness variation.

#### 琴鍵式入料壓片

特殊設計之琴鍵式入料壓片，即使木料厚度不均時，仍可確保順暢的送料效果。



### FREQUENCY INVERTER CONTROLLER

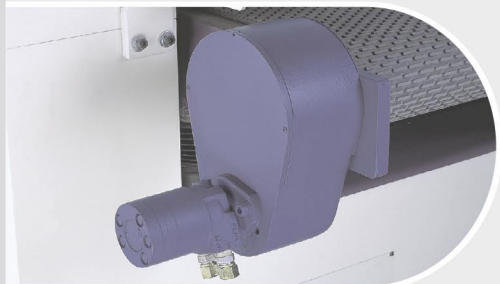
Can control the speed of sanding belt, let the sanding perfection. Special sanding are accordance with user.

#### 變頻器

可控制砂帶之切線速度，使砂光效果更完美，亦可依使用者之需求做特別效果之研磨。

**\*Standard accessories in B series.**

**\*B 系列為標準配備**



### HYDRAULIC CONVEYOR DEVICE

The conveyor belt is driven by a motor for variable hydraulic feed speed change. High performance hydraulic power unit provides smooth and powerful drive.

#### 油壓輸送裝置

輸送帶採用油壓馬達驅動提供無段送料速度。高性能油壓動力單件確保送料順暢，強力驅動性能。



### PANEL CLEANING BRUSH ROLLER

Built at outfeed end of the machine, this panel cleaning brush roller cleans powder on the sanded panel.

#### 棕刷輪

安裝於機器之出料端，此棕刷輪可以清除砂光後成品上之粉塵。



### VACUUM SUCTION CONVEYOR BELT

It provides convenient and fast workpiece loading and unloading. Powerful suction force holds workpiece firmly.

#### 真空輸送帶

此真空輸送帶提昇方便快速的入料及取料，強力真空吸力確保工件吸住牢固。

## 配備表

Accessories 配備	Air Pad	Digital Readout	Air Jet Cleaner	Brushing Roller	Iron Contact Roller	Thickness Conveyer Belt	Frequency inverter	Pressure Switch	Safety Door 安全門	Vacuum Table	Hydraulic Feed	Piano Key Type Infeed Pressure Jaws
型式MODEL	充氣式壓板	數字顯示器	吹氣式清潔器	棕刷輪	鋼輪	厚輸送帶	變頻器	壓力開關	(自動斷電)	真空輸送帶	油壓送料	琴鍵式入料壓片
<b>Spiral Cutter head Planer Sander 螺旋刀頭刨木砂光機</b>												
25N	—	✓	—		—	✓	—	✓				✓
25NR	—	✓				✓		✓				✓
25NK		✓			—	✓		✓				✓
25NRK		✓				✓		✓				✓
37N	—	✓	—		—	✓	—	✓				✓
37NR	—	✓				✓		✓				✓
37NK		✓			—	✓		✓				✓
37NRK		✓				✓		✓				✓
43N	—	✓	—		—	✓	—	✓				✓
43NR	—	✓				✓		✓				✓
43NK		✓			—	✓		✓				✓
43NRK		✓				✓		✓				✓
52N	—	✓	—		—	✓	—	✓				✓
52NR	—	✓				✓		✓				✓
52NK		✓			—	✓		✓				✓
52NRK		✓				✓		✓				✓
<b>Precision type Wide Belt Sander 精密型寬帶砂光機</b>												
25M		✓				✓		✓				
25GM		✓				✓		✓				
25GGM		✓				✓		✓				
37M		✓				✓		✓				
37GM		✓				✓		✓				
37GGM		✓				✓		✓				
43M		✓				✓		✓				
43GM		✓				✓		✓				
43GGM		✓				✓		✓				
52M		✓				✓		✓				
52GM		✓				✓		✓				
52GGM		✓				✓		✓				

### Remarks 備註

✓ Standard accessories 標準配備



Optional accessories 可選購配備